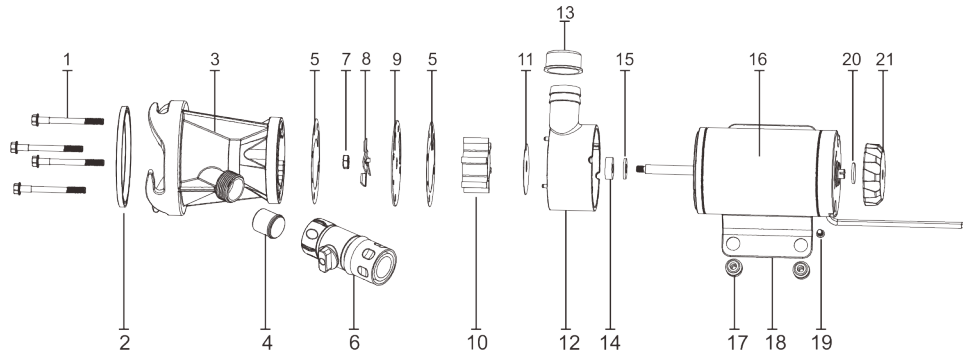


DETAILED COMPOSITION



Key	Description	Key	Description
1	Screw	12	Impeller housing
2	Pump head gasket	13	Outlet Cover
3	Pump head	14	Oil seal
4	Pump head check valve	15	Seal
5	gasket	16	Motor
6	Resin connector	17	Rubber Feet
7	Screw Nut	18	Iron Plate
8	Blade	19	Screw
9	Round stainless steel sheet	20	Adjustment Cap O-ring
10	Impeller	21	Adjustment Cap
11	Convex stainless steel sheet		

SEAFLO®

MACERATOR PUMP 02 SERIES

INSTALLATION MANUAL

SFMP-120-02

FEATURES

- Connects directly to the RV waste outlet
- Garden hose discharge port
- Fresh water rinse capabilities
- Ability to dump longer distances
- Ability to drain holding tanks at home
- Easy clean up and storage

SPECIFICATIONS

Pump: Self-Priming Flexible Impeller with Stainless Steel Wearplate

Macerator: Stainless Steel Cutter reduces particle size to 1/8" (4 mm) maximum

Seal: Lip Type

Ports: Inlet – 3" (75 mm) RV Connector

Outlet – 1" hose barb

Motor: 12 Vdc Permanent Magnet Type, Fully Enclosed, with Stainless Steel Shaft

Intermittent Duty Only

Weight: 5.1 lbs (2.3 kgs)

Case Size: 11.6" x 5.79" x 5.2" (294.5 mm x 147 mm x 132 mm)

Model	Voltage	Head Ft[m]	Flow [gpm/lpm]	Max Draw(A)
SFMP1-120-02	12V	0/0	12/45	12
SFMP2-120-02	24V	0/0	12/45	7

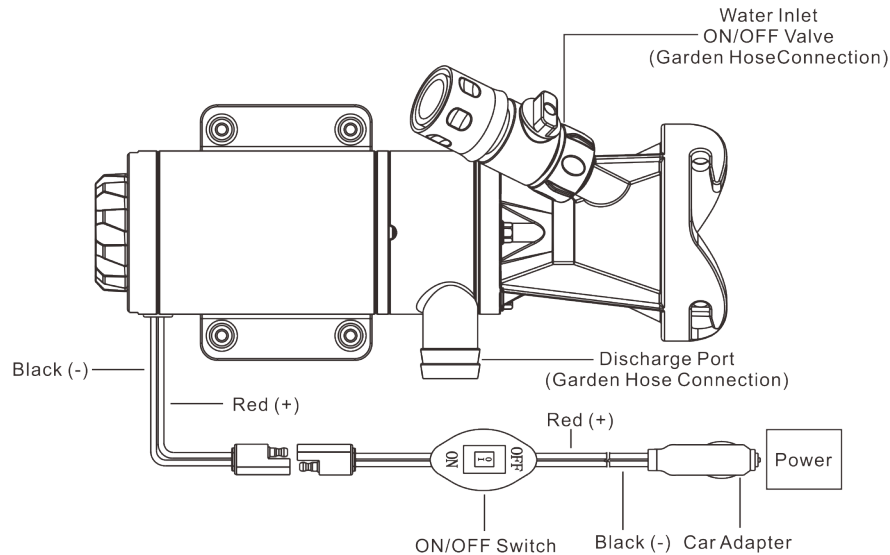
APPLICATION

The SFMP-120-02 DC waste pump is the ideal solution for emptying holding tanks on recreational vehicles and avoiding dump stations. Empties a typical 40-gallon holding tank in less than 5 minutes. Do not run more than 15 minutes continuously. The 02-series waste pump will macerate and pump all waste and tissue normally found in recreational vehicle waste systems. **IT WILL NOT HANDLE HARD SOLID OBJECTS, SANITARY NAPKINS OR RAGS.**

WARNING

1. DO NOT RUN DRY FOR MORE THAN 30 SECONDS.
2. DO NOT MOUNT PERMANENTLY TO THE RV WASTE PORT.

WIRING DIAGRAM



OPERATING INSTRUCTIONS

1. Remove end cap from drain pipe.
2. Install waste pump on drain in any convenient position, twisting clockwise to lock.
Be sure that o-ring is on pump adapter prior to installing unit.
3. Install waste/garden hose on discharge port adapter.
4. Install rinse water hose to on-off valve.
5. Open black water valve, turn on pump.
6. Turn off pump and open gray water valve. Let gray water backflush black water tank. Turn on pump.
7. Turn off pump, open rinsing valve and back fill tanks for rinsing. Turn on pump. Turn off rinse water.
Drain tanks.
8. Close both drain valves, turn on rinse water (40 PSI max.) and pump. Rinse pump and discharge hose.
9. Turn off water and pump, disconnect hose and pump. Store until next use.
10. Replace end cap on drain pipe.

ELECTRICAL INSTRUCTIONS

1. Refer to electrical drawing below. Connect the switch assembly to RV waste pump motor wires with butt connectors (connect the red motor wire to the red switch wire; and the black motor wire to the black switch wire).

2. Connect the car adaptor with power
3. Fuse Replacement: The fuse is inside the car adaptor. Use an automotive 20 amp fuse for replacement.

12 Volt System Total Wire Length*	Min. Wire Size (20 Amps)	
	3% Drop	10% Drop
Feet [m]	GA	GA
1-10 [3.3]	#10	#16
11-20 [3.3-6]	#8	#14
21-30 [6.4-9.1]	#6	#12
31-60 [9.1-18.2]	#4	#10

*length from power source to motor and back to ground.

MAINTENANCE

TURN OFF ALL POWER!

• REAR END CAP/MOTOR SHAFT ACCESS

Loosen shaft knob(21),put the D-type rotary knob mounted on one end of the rear end of the motor.

• PUMP DISASSEMBLY

Remove 4 cover screws (1). Remove cutter housing (3) and gasket (5). It is necessary to hold the motor shaft steady. Remove hex nut (7) and cutter blades (8). Insert a screwdriver into slot on motor shaft(see slot access above), or slip a thin wrench(9/32"[7mm]) behind blades onto flat of motor shaft. Remove hex nut (7) and cutter (8). Remove top wear plate (9), gasket (5), impeller (10) and bottom wear plate (11). Remove impeller housing (12) and shaft seal (14). It is not necessary to remove slinger (15).

• PUMP ASSEMBLY

Ensure the slinger (15) is on the motor shaft. Ensure that the shaft seal (14) can be inserted into the right position of impeller housing (12). Install the impeller housing (12) to the motor shaft. Install the bottom wear plate (11) insert to the impeller housing (11). Rotate the impeller (9) to the impeller housing (12) with counterclockwise. Install the gasket (5) and top wear plate (9). Install the cutter blade (8), and aligned with the motor shaft. Fixing the motor shaft with a screwdriver or a wrench(9/32"[7mm]) to tighten the hex nut (7). Installed gasket (5), cutter housing (3), and tighten the screw (1).